

2014-2015 Denton ISD Elementary School Menu

Breakfast Menu

MEAL PRICING

BREAKFAST

- Student Breakfast \$1.10
- Adult/Guest Breakfast \$2.00
- Reduced Breakfast..... \$0.30

LUNCH

- Student Lunch \$2.75
- Adult Lunch \$3.50
- Reduced Lunch \$0.40

WEEK 1



MONDAY

- Cereal & Cinnamon Toast
- Chilled Pineapple

TUESDAY

- Breakfast Pizza
- Fruit Cup

WEDNESDAY

- Pancake on a Stick
- Seasonal Fresh Fruit

THURSDAY

- Turkey Sausage & Biscuit
- Chilled Apricots

FRIDAY

- Morning Sausage Roll
- Chilled Mixed Fruit

WEEK 2



MONDAY

- Cereal & Cinnamon Toast
- Fruit Cup

TUESDAY

- Turkey Sausage & Biscuit
- Chilled Pineapple

WEDNESDAY

- Waffle Stix
- Mandarin Oranges

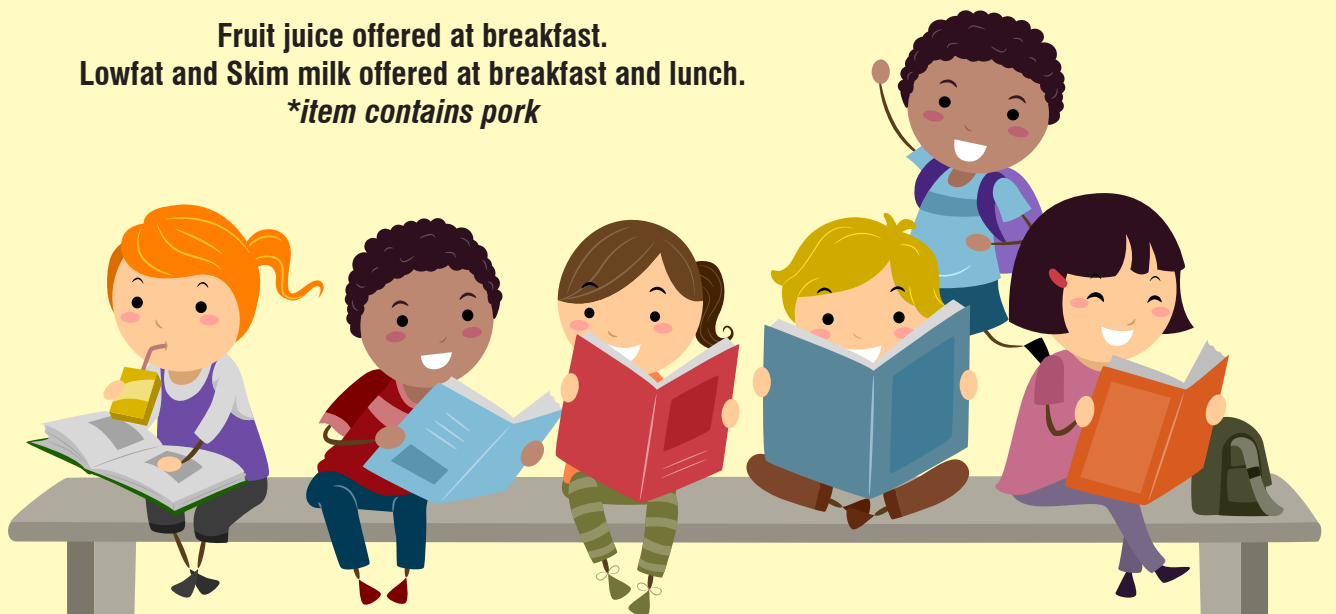
THURSDAY

- Breakfast Taco
- Seasonal Fresh Fruit

FRIDAY

- French Toast Sticks
- Chilled Peaches

Fruit juice offered at breakfast.
Lowfat and Skim milk offered at breakfast and lunch.
*item contains pork



• Menus and Nutrient Analysis of Menus can be found on our website at www.dentonisd.org.

• Menu subject to change due to special campus events.

• For the annual holiday meal menu, go to www.dentonisd.org.

• Menu subject to change without notice

Lunch Menu

WEEK 1



MONDAY

- Italian Meatballs w/Garlic Bread
- Steamed Broccoli Florets
- Pinto Beans
- Chilled Pineapple

TUESDAY

- Popcorn Chicken w/Roll
- Potato Wedges
- California Vegetable Blend
- Fruity Raisins

WEDNESDAY

- Carnival Corndog
- Steamed Carrots
- Ranch Style Beans
- Seasonal Fresh Fruit

THURSDAY

- Personal Pizza w/Breadstick
- Tossed Romaine Salad
- Whole Kernel Corn
- 100% Fruit Slush

FRIDAY

- Fish Nuggets
- Green Beans
- Baby Carrots w/Ranch Dip
- Seasonal Fresh Fruit

WEEK 2



MONDAY

- Flatbread Chicken Melt
- Ranch Style Beans
- Steamed Broccoli Florets
- Fruit Cup

TUESDAY

- Steak Fingers w/Hot Roll
- Mashed Potatoes & Gravy
- Green Beans
- Seasonal Fresh Fruit

WEDNESDAY

- Cheese Ravioli w/Breadstick
- Tossed Romaine Salad
- Mixed Vegetables
- 100%Fruit Slush

THURSDAY

- Crazy Nachos w/Spanish Rice
- Refried Beans
- Salsa Cup
- Chilled Pears

FRIDAY

- Hamburger/Cheeseburger
- Oven Baked Fries
- Baby Carrots w/Ranch Dip
- Fruity Raisins

WEEK 3



MONDAY

- BBQ Chicken w/ Hot Roll
- Tossed Romaine Salad
- Ranch Style Beans
- Fruity Raisins

TUESDAY

- Personal Pizza w/Breadstick
- Cherry Tomatoes w/Ranch
- Green Beans
- Seasonal Fresh Fruit

WEDNESDAY

- Cheese Omelet w/ Blueberry Muffin
- Tater Tots
- Salsa cup
- Mandarin Oranges

THURSDAY

- Chicken Nuggets w/Roll
- Mashed Potatoes & Gravy
- California Vegetable Blend
- 100% Fruit Slush

FRIDAY

- Gametime Hot Dog
- Steamed Broccoli Florets
- Pinto Beans
- Seasonal Fresh Fruit

WEEK 4



MONDAY

- Macaroni and Cheese
- Steamed Carrots
- Green Beans
- 100% Fruit Slush

TUESDAY

- Hamburger/Cheeseburger
- Oven Baked Fries
- Celery Sticks w/Ranch Dip
- Fruit Cup

WEDNESDAY

- Chicken Tenders
- Tossed Romaine Salad
- Pinto Beans
- Chilled Peaches

THURSDAY

- Chili Cheese Nachos w/Spanish Rice
- Refried Beans
- Salsa Cup
- Fruity Raisins

FRIDAY

- Steak Fingers w/ Biscuit
- Mashed Potatoes & Gravy
- Steamed Broccoli Florets
- Seasonal Fresh Fruit

A La Carte Items

Many schools offer items not planned on the menu such as crackers and yogurt. These items are priced separately. If you do not want your child to use his/her money for these purchases, please make arrangements with your child's cafeteria manager to block their account. For a complete list of a la carte items, go to www.dentonisd.org.

2nd Option

A 2nd Option is an entrée a student may select if they do not want the 1st entrée that is on the menu. For example, a student may select a Bistro Box if they do not want Steak Fingers w/ Roll. Please note: A student is not required to take an entrée to create a reimbursable meal.

2nd Option

- Taco Salad Oct, Apr
- Submarine Sandwich Nov, Dec
- Cheesy Potato Skins Jan, Feb
- Bistro Box Aug/Sept, Mar, May/June

Month(s) Available

- Taco Salad Oct, Apr
- Submarine Sandwich Nov, Dec
- Cheesy Potato Skins Jan, Feb
- Bistro Box Aug/Sept, Mar, May/June

2014-2015 Meal Cycles

Breakfast served on 2-week cycle
Lunch served on 4-week cycle

Breakfast Cycle		AUGUST 2014						
★ Week 1	★ Week 2	Sun	Mon	Tue	Wed	Thu	Fri	Sat
							1	2
			3	4	5	6	7	8
			9	10	11	12	13	14
			15	16	17	18	19	20
			21	22	23	24	25	26
			27	28	29	30	31	
Lunch Cycle		SEPTEMBER 2014						
★ Week 1	★ Week 2	Sun	Mon	Tue	Wed	Thu	Fri	Sat
			1	2	3	4	5	6
			7	8	9	10	11	12
			13	14	15	16	17	18
			19	20	21	22	23	24
			25	26	27	28	29	30
			31					
		OCTOBER 2014						
★ Week 1	★ Week 2	Sun	Mon	Tue	Wed	Thu	Fri	Sat
							1	2
			3	4	5	6	7	8
			9	10	11	12	13	14
			15	16	17	18	19	20
			21	22	23	24	25	26
			27	28	29	30	31	
		NOVEMBER 2014						
★ Week 1	★ Week 2	Sun	Mon	Tue	Wed	Thu	Fri	Sat
			1	2	3	4	5	6
			7	8	9	10	11	12
			13	14	15	16	17	18
			19	20	21	22	23	24
			25	26	27	28	29	30
		DECEMBER 2014						
★ Week 1	★ Week 2	Sun	Mon	Tue	Wed	Thu	Fri	Sat
			1	2	3	4	5	6
			7	8	9	10	11	12
			13	14	15	16	17	18
			19	20	21	22	23	24
			25	26	27	28	29	30
			31					
		JANUARY 2015						
★ Week 1	★ Week 2	Sun	Mon	Tue	Wed	Thu	Fri	Sat
			1	2	3	4	5	6
			7	8	9	10	11	12
			13	14	15	16	17	18
			19	20	21	22	23	24
			25	26	27	28	29	30
			31					
		FEBRUARY 2015						
★ Week 1	★ Week 2	Sun	Mon	Tue	Wed	Thu	Fri	Sat
			1	2	3	4	5	6
			7	8	9	10	11	12
			13	14	15	16	17	18
			19	20	21	22	23	24
			25	26	27	28	29	30
		MARCH 2015						
★ Week 1	★ Week 2	Sun	Mon	Tue	Wed	Thu	Fri	Sat
			1	2	3	4	5	6
			7	8	9	10	11	12
			13	14	15	16	17	18
			19	20	21	22	23	24
			25	26	27	28	29	30
			31					
		APRIL 2015						
★ Week 1	★ Week 2	Sun	Mon	Tue	Wed	Thu	Fri	Sat
			1	2	3	4	5	6
			7	8	9	10	11	12
			13	14	15	16	17	18
			19	20	21	22	23	24
			25	26	27	28	29	30
		MAY 2015						
★ Week 1	★ Week 2	Sun	Mon	Tue	Wed	Thu	Fri	Sat
			1	2	3	4	5	6
			7	8	9	10	11	12
			13	14	15	16	17	18
			19	20	21	22	23	24
			25	26	27	28	29	30
			31					
		JUNE 2015						
★ Week 1	★ Week 2	Sun	Mon	Tue	Wed	Thu	Fri	Sat
			1	2	3	4	5	6
			7	8	9	10	11	12
			13	14	15	16	17	18
			19	20	21	22	23	24
			25	26	27	28	29	30

Check out our Facebook page! Go to www.facebook.com/DISDchildnutrition

Payment of Meals

You can place money in your child's account 3 ways:



Cash



Check

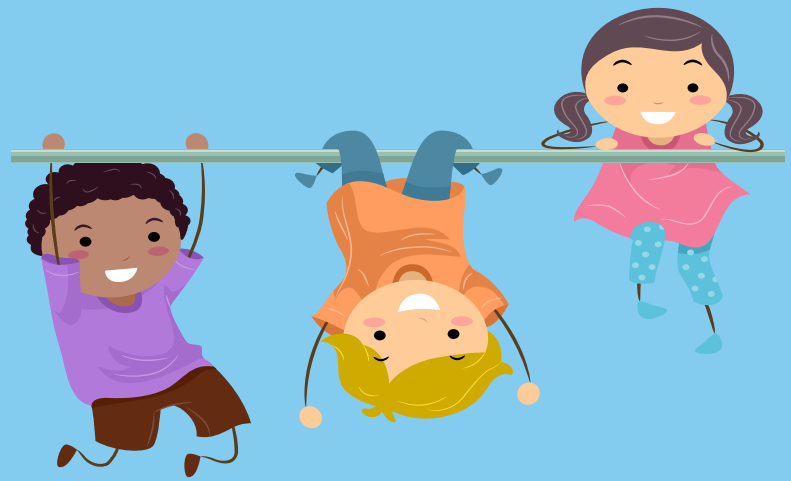


**Pay online at
www.parentonline.net.**

Please note that our cashiers will not accept bills greater than \$20.00 from students.

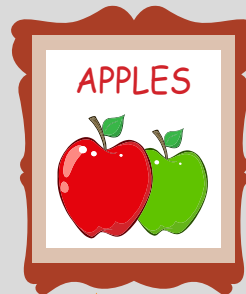


2014-2015 Elementary School Menu

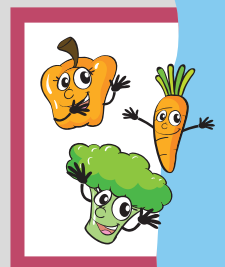


Denton Independent School District
Child Nutrition Department
230 N. Mayhill Rd.
Denton, TX 76208

2014-2015 Elementary School Menu



HEALTHY
EATING
=
HAPPY
LEARNERS



The U.S. Department of Agriculture prohibits discrimination against its customers, employees, and applicants for employment on the basis of race, color, national origin, age, disability, sex, gender identity, religion, reprisal, and where applicable, political beliefs, marital status, familial or parental status, sexual orientation, or all or part of an individual's income is derived from any public assistance program, or protected genetic information in employment or in any program or activity conducted or funded by the Department. (Not all prohibited basis will apply to all programs and/or employment activities.)

If you wish to file a Civil Rights program complaint of discrimination, complete the USDA Program Discrimination Complaint Form, found online at http://www.ascr.usda.gov/complaint_filing_cust.html, or at any USDA office, or call (866) 632-9992 to request the form. You may also write a letter containing all of the information requested in the form. Send your completed complaint form or letter to us by mail at U.S. Department of Agriculture, Director, Office of Adjudication, 1400 Independence Avenue, S.W., Washington, D.C. 20250-9410, by fax (202) 690-7442 or email at program.intake@usda.gov. Individuals who are deaf, hard of hearing or have speech disabilities may contact USDA through the Federal Relay Service at (800) 877-8339; or (800) 845-6136 (Spanish). USDA is an equal opportunity provider and employer.

